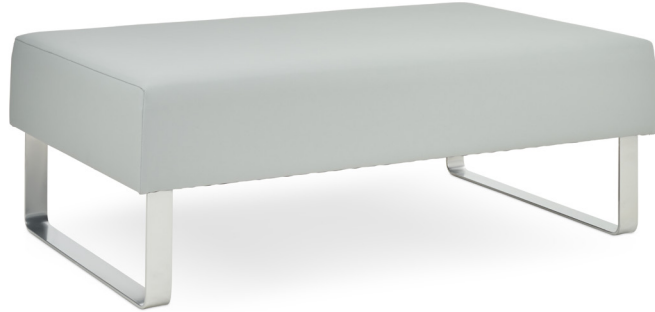


**curaFORM**® CA3831

# Detroit

Soft Seating – double seat up-holstered chair, no back

The Detroit is a clever modular system with endless possibilities of configuration for application as a rewarding piece of healthcare furniture with the use of 90-degree planning pieces. The units are interchangeable and are available without backrests to create bench style seating or versatile arrangements to suit different departments within a hospital. The Detroit range works well as a patient chair, visitor chair or staff chair.



## DIMENSIONS

<b>Total Depth</b> 770mm	<b>Height</b> 430mm	<b>Seat Width</b> 1220mm	<b>Armrest Width</b> n/a	<b>Armrest Height (Above Seat)</b> n/a	<b>Backrest Height (Above Seat)</b> n/a
<b>Total Width</b> 1220mm	<b>Seat Height</b> 430mm	<b>Seat Depth</b> 770mm			

**Main Frame Material**  
Metal and wood

**Available as 5 Day Delivery**  
No

**Max Weight**  
240kg

**Areas for use**  
Reception, break out, day rooms

**Net Weight**  
21.60kg

**Other Features**  
Metal base frame, modular

**Principal Materials**  
Metal, wood, foam, vinyl

**Vinyl Type & Spec**  
Crib 5, anti-microbial, 300,000 martindale rubs

**Wood From Sustainable Source Cert No.**  
FSC-STD-40-004 and FSC-STD-50-001 Cert no. TT-COC-001809

**Recycled Materials**  
20%

**Percentage of Materials Recyclable**  
98%