

**curaCARE**®  
Patient Centred Design

**CA3258**

# Arvada

The ultimate patient and visitor chair, 100% designed for healthcare now with a **25 year warranty** on the frame.



**Frame for Life™**



All other parts are replaceable including the seat, back and arms for lowest lifecycle cost.

---

## DIMENSIONS

<b>Total Depth</b> 720mm	<b>Height</b> 1250mm	<b>Seat Width</b> 650mm	<b>Armrest Width</b> 80mm	<b>Armrest Height (Above Seat)</b> 180mm	<b>Backrest Height (Above Seat)</b> 840mm
<b>Total Width</b> 770mm	<b>Seat Height</b> 480mm	<b>Seat Depth</b> 480mm			

---

### Main Frame Material

Metal

### Available as 48 Hour Delivery

No

### Max Weight

300kg

### Areas for use

Bedside, waiting areas, elective surgery, elderly care

### Net Weight

22kg

### Other Features

Metal frame, removable seat, polyurethane armrest pads

### Principal Materials

Metal, wood, foam, vinyl

### Vinyl Type & Spec

Crib 5, anti-microbial, 300,000 martindale rubs

### Wood From Sustainable Source

#### Cert No.

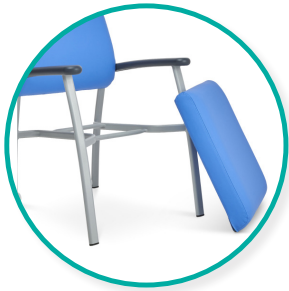
FSC-STD-40-004 and FSC-STD-50-001 Cert no. TT-COC-001809

### Recycled Materials

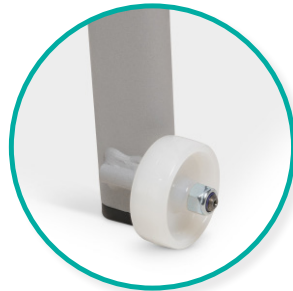
No

### Percentage of Materials Recyclable

98%



**Removable seat cushion for easy cleaning**



**Housekeeping wheels**