

CA3253

Arvada

The ultimate patient and
visitor chair, 100% designed
for healthcare now with a
25 year warranty
on the frame.



Frame for Life[™]



All other parts are replaceable
including the seat, back and
arms for lowest lifecycle cost.

DIMENSIONS

Total Depth 720mm	Height 1250-1350mm	Seat Width 515mm	Armrest Width 80mm	Armrest Height (Above Seat) 180mm	Backrest Height (Above Seat) 840mm
Total Width 645mm	Seat Height 480-580mm	Seat Depth 480mm			

Main Frame Material

Metal

Available as 5 Day Delivery

Yes

Max Weight

200kg

Areas for use

Bedside, waiting areas, elective surgery, elderly care

Net Weight

19.5kg

Other Features

Metal frame, removable seat, height adjustable legs

Principal Materials

Metal, wood, foam, vinyl

Vinyl Type & Spec

Crib 5, anti-microbial, 300,000 martindale rubs

Wood From Sustainable Source
Cert No.

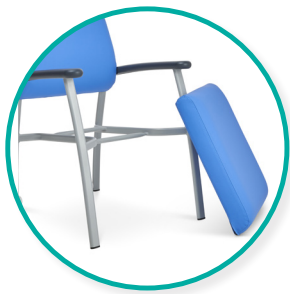
FSC-STD-40-004 and FSC-STD-50-001 Cert no. TT-COC-001809

Recycled Materials

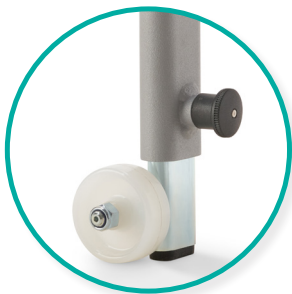
No

Percentage of Materials Recyclable

98%



Removable seat cushion for easy cleaning



Housekeeping wheels and height adjustable