

curaCARE[®]
Patient Centred Design

CA3251

Arvada

The ultimate patient and visitor chair, 100% designed for healthcare now with a **25 year warranty** on the frame.



Frame for Life[™]



All other parts are replaceable including the seat, back and arms for lowest lifecycle cost.

DIMENSIONS

Total Depth	Height	Seat Width	Armrest Width	Armrest Height (Above Seat)	Backrest Height (Above Seat)
720mm	1250mm	515mm	80mm		
Total Width	Seat Height	Seat Depth		180mm	840mm
645mm	480mm	480mm			

Main Frame Material

Metal

Available as 5 Day Delivery

Yes

Max Weight

200kg

Areas for use

Bedside, waiting areas, elective surgery, elderly care

Net Weight

18.5kg

Other Features

Metal frame, removable seat, polyurethane armrest pads

Principal Materials

Metal, wood, foam, vinyl

Vinyl Type & Spec

Crib 5, anti-microbial, 300,000 martindale rubs

Wood From Sustainable Source
Cert No.

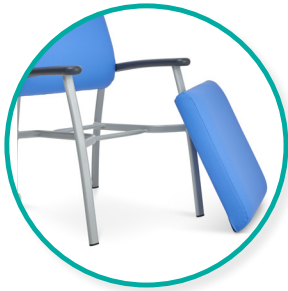
FSC-STD-40-004 and FSC-STD-50-001 Cert no. TT-COC-001809

Recycled Materials

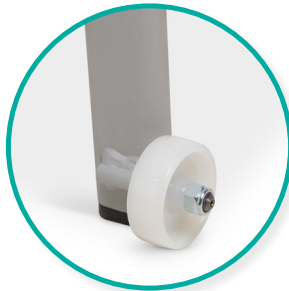
No

Percentage of Materials Recyclable

98%



Removable seat
cushion for
easy cleaning



Housekeeping wheels