

curaCARE[®]
Patient Centred Design

CA3249

Arvada

The ultimate patient and visitor chair, 100% designed for healthcare now with a **25 year warranty** on the frame.



Frame for Life[™]



All other parts are replaceable including the seat, back and arms for lowest lifecycle cost.

DIMENSIONS

Total Depth	Height	Seat Width	Armrest Width	Armrest Height (Above Seat)	Backrest Height (Above Seat)
720mm	1250mm	515mm	80mm		
Total Width	Seat Height	Seat Depth		0-180mm	840mm
700mm	480mm	480mm			

Main Frame Material

Metal

Available as 5 Day Delivery

No

Max Weight

200kg

Areas for use

Bedside, waiting areas, elective surgery, elderly care

Net Weight

23kg

Other Features

Metal frame, removable seat, polyurethane armrest pads, adjustable drop arms to flush with seat

Principal Materials

Metal, wood, foam, vinyl

Vinyl Type & Spec

Crib 5, anti-microbial, 300,000 martindale rubs

Wood From Sustainable Source

Cert No.

FSC-STD-40-004 and FSC-STD-50-001 Cert no. TT-COC-001809

Recycled Materials

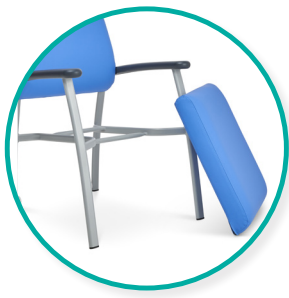
No

Percentage of Materials Recyclable

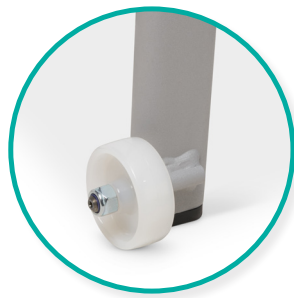
98%



Side-transfer arms



Removable seat cushion for easy cleaning



Housekeeping wheels